

PROTECTOR ULTRA 2.0 GTX

lime-green
Art. No. 603113



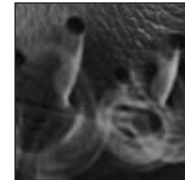
**CE 0193 EN ISO 20345:2011 S3 HRO HI CI WR /
CE EN ISO 17249:2013 + AC:2014 - Level 2**

Leather thickness 2.8 – 3.0 mm, breathable and waterproof with GORE-TEX® Performance, cut protection class 2, leg height 20 cm, sole 028

Available sizes UK 6 – 12



603113



HAIX® Climate System



HAIX® 2-Zone Lacing



Upper Material

Suede leather, hydrophobized, breathable, 2.8 – 3.0 mm thick

Cut Protection

Class 2 cut protection (24m/sec).
Conforming to EN ISO 17249:2013.

Inner Lining

GORE-TEX® Performance; waterproof and breathable. Abrasion-proof lining fabric with fleece inner layer. Optimized climate comfort for all seasons even under extreme conditions.

Plastic/fleece insole

Moisture absorbent, anti-torsion design for outstanding stability, reducing point pressure (from stones, etc.).

Foot bed

Comfortable, impact-absorbing, moisture-wicking. Separate heel cup ensures optimized cushioning and foot guidance.

Sole

Sturdy VIBRAM rubber/PU sole with rugged profile and abrasion-proof. The lightweight PU cushioning guarantees excellent impact absorption and proper toe-to-heel movement. The non-marking outer sole is resistant to heat and fuel-oil. Conforming to EN ISO 20345:2011.

HAIX® Protective toe cap

Anatomically designed, wide cushioned protective toe cap.

HAIX® Climate System

The HAIX Climate system uses the pumping movement, which permits air circulation with every step – warm air is released and fresh air comes in through the vent holes at the top of the boot.

HAIX® 2-Zone Lacing

Two Zone Lacing System enables a separate adjustment of the boot to the foot and leg area.

GRIP+ Spikes

Metal spikes that screw into the shoe sole provide extra grip and prevent slipping on branches and felled tree trunks.

Other features

Anti-friction lacing elements, no side seams, sturdy sole edge, with rubber toe and heel protection for prolonged service life. Soft padded and extensible shaft closure for addition protection against dirt (eg. as wood shavings)

UK	3	3½	4	4½	5	5½	6	6½	7	7½	8	8½	9	9½	10	10½	11	11½	12	12½	13	13½	14	14½	15
EU	35	36	37	37	38	39	39	40	41	41	42	43	43	44	45	45	46	47	47	48	48	49	50	50	51
US	4	4½	5	5½	6	6½	7	7½	8	8½	9	9½	10	10½	11	11½	12	12½	13	13½	14	14½	15	15½	16

HAIX®-Schuhe, Produktions- und Vertriebs GmbH
Auhofstrasse 10, 84048 Mainburg, Germany
T. +49(0)8751/8625-0, F. +49(0)8751/8625-25
info@haix.de, www.haix.com